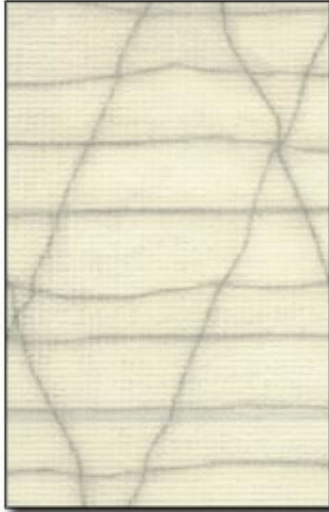


Ultra Electronic ESD Conductive Adhesive



Detail of Ultra Electronic



Applications
Ultra Electronic

Ultra® Electronic is a full surface 10^4 ohms textile re-enforced ESD conductive double sided self stick roll flooring adhesive. It is VOC free, free of odors, carcinogens, out-gassing and is totally safe for people. The adhesive is acrylic based, plasticizer resistant, contains no formaldehydes and has unrestricted waste disposal. Ultra® Electronic has a lower adhesive strength to the old flooring and a high strength adhesion to the new flooring. Installations (i.e. carpet tile over access floors, trenches, or old carpet) are releasable. (See restrictions in detailed installation instructions).

Availability:

7401-100025 Rolls 39.5" x 82'6" (1 m x 25 m)

Applications:

Subfloors:

Ultra® may be installed only over dry (<3.0 lb/1000 sft.) structurally sound firm dust and oil-free surfaces, such as concrete, old glue-down carpet, VAT, vinyl composition tile, homogeneous vinyl sheet or tile, poured epoxy, ceramic, stone or terrazzo. It may be used over steel or

HPL covered access floors. It may be used over wood and parquet, plywood and laminates only if these sub-floors are free of acrylic finishes and are not directly installed over on-grade or below-grade concrete without an air space between the concrete and the wood products (Moisture!!). Dry adhesive may not be used over gypsum patches. Not suitable for outdoor installations.

New Flooring:

Ultra® Electronic may be used to adhere ESD conductive AZO Berber carpet rolls or tile with an integral conductive backing. It is also used to install ESD conductive solid vinyl sheet (ESD conductive euro-flex sheet or tile or ESD conductive euro-flex High Traction tile; ESD conductive Unifloor UC sheet; ESD static dissipative Unifloor U78 series or Unifloor static dissipative U Series with an integral conductive backing.

Unsuitable New Flooring:

Ultra® Electronic should not be used with dimensionally non-stable flooring products, ESD conductive rubber sheet or tile, or STC vinyl composition tile (dusty back).

Advantages of Installation with Ultra® Dry Adhesive:

Save the dust, debris, expense of disposal of old flooring and re-prepping of old sub-floors necessitated by tear out. Dry adhesive has no open time. It can be laid directly over old floors. Vinyl may be heat welded immediately. Installations may be subjected to rolling loads and heavy traffic without waiting. No downtime - Can be installed during ordinary business operations.

NOTE

Ultra® Electronic cannot make non-conductive flooring conductive. Conductive flooring must have a full surface conductive backing. Pressed ESD tiles without fully conductive backings do not work satisfactorily (gain of 1-3 potencies).



Ground Zero Electrostatics Ultra Electronic ESD Conductive Adhesive

Installation steps:

Roll out Ultra® Electronic perpendicular to new flooring. Overlap and double cut seams. Connect double cut sheets with copper tape and provide grounding in multiple locations. For ESD conductive carpet over glue-down carpet use Ultra construction tape to re-enforce perimeters and seams beneath the Ultra®. Unroll new ESD conductive carpet or ESD conductive vinyl, seam seal as per manufacturer's specifications. Roll and put into service.

Alternate Installation steps:

Ultra® Electronic provides tile-to-tile conductivity. When installing ESD conductive rolls of carpet or vinyl with fully integral conductive backings, a lower cost alternate installation may be used. Use Ultra® Original as a non-conductive full surface adhesive, apply Ultra Circuit to the perimeter of the installation and every 30 ft. approx. across the seams, and connect with Ground Zero Copper Tape to ground.

CAUTION

Request Detailed Installation Instructions and conduct tests before installation.



4916 26th Street West, Suite 100, Bradenton, Florida 34207

Toll Free 877-GND-ZERO (463-1376), **Direct Phone** 941-751-7581 **Fax** 1-941-751-7586

Email sales@gndzero.com

http://www.gndzero.com