



# Ground Zero Electrostatics DC-200 CHAIR & EQUIPMENT GROUNDER

## DC-200 CHAIR & EQUIPMENT GROUNDER

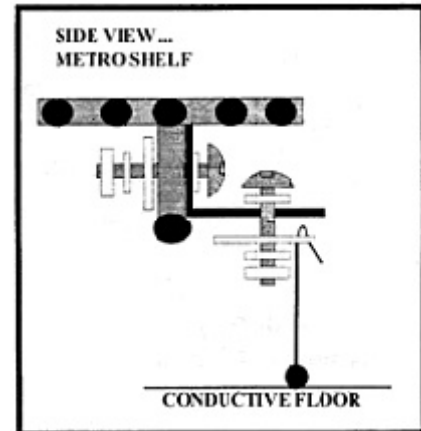
YOU HAVE JUST PURCHASED THE FINEST DEVICE AVAILABLE FOR GROUNDING YOUR CHAIRS, CARTS AND OTHER MOBILE EQUIPMENT COMMONLY FOUND IN YOUR ESD ASSEMBLY AREAS.

THE DC-200 INCORPORATES THE USE OF ALL "STAINLESS" COMPONENTS.

COMPLETE ASSEMBLY INSTRUCTIONS ARE FOUND ON THIS PAGE. IF YOU HAVE ANY QUESTIONS, CONTACT OUR OFFICE AT YOUR CONVENIENCE.

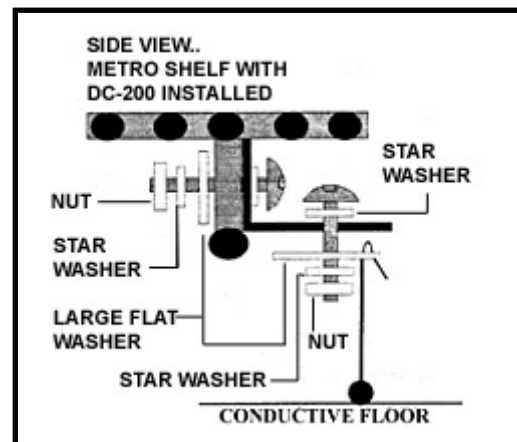
**NOTE: YOUR FLOOR MUST BE EQUIPPED WITH EITHER CONDUCTIVE TILE, OR A CONDUCTIVE WAX OR COATING MUST BE APPLIED. THE DC-200 TAKES ALL STATIC CHARGE TO THE FLOOR TO BE DISSIPATED.**

QTY	PART #	DESCRIPTION
1	88500	Mounting Bracket (L)
1	88000	1/4"- 20 Stainless Bolt
2	88200	Stainless Star Washers
1	88600	Large Stainless Flat Washer w/ cable adjust holes
1	88300	Stainless Nut
1	88400/88401	Stainless Cable/Ball Assembly



## SPECIAL INSTRUCTIONS:

1. When installing the DC-200, be certain to measure the distance from the point of installation on the cart, chair, ect., to the floor. ADJUST THE CABLE LENGTH TO CORRESPOND TO THIS DISTANCE BEFORE FINISHING INSTALLATION.
2. Allow for at least  $\frac{3}{4}$ " of slack in the cable to allow for proper "tracking" of the ball when the equipment is being moved.
3. Install washers and nut as shown in the drawing.
4. Tighten the nut to secure the cable.
5. Installation is now complete



4916 26<sup>th</sup> Street West, Suite 100, Bradenton, Florida 34207

Toll Free 877-GND-ZERO (463-1376), Direct Phone 941-751-7581 Fax 1-941-751-7586

Email [sales@gndzero.com](mailto:sales@gndzero.com)

<http://www.gndzero.com>